

Anatomy

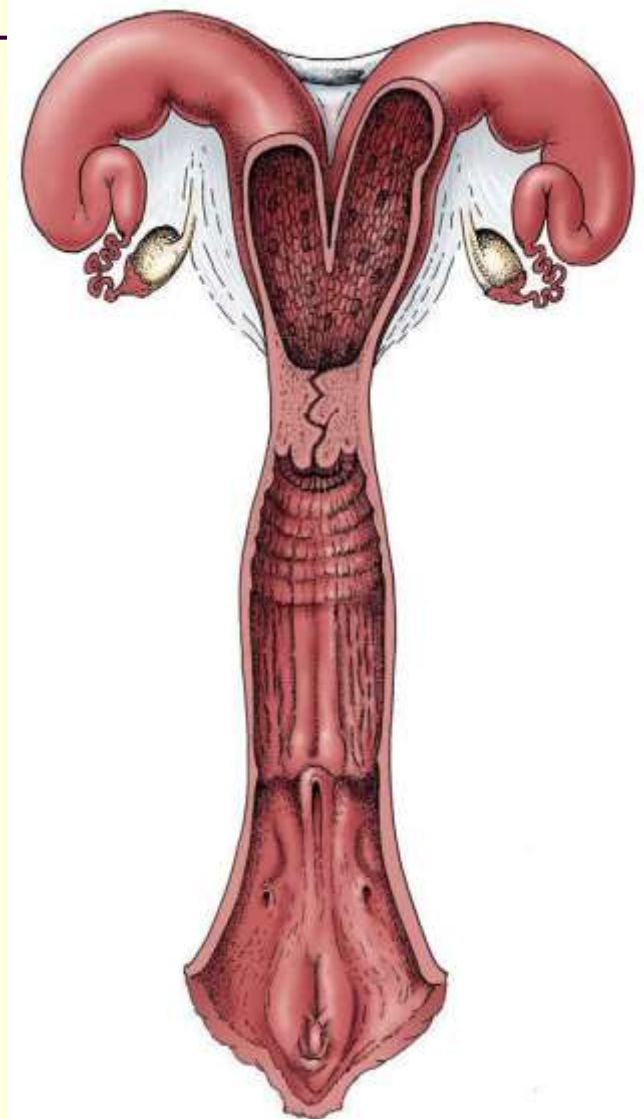
FEMALE REPRODUCTIVE SYSTEM

By: *DR. AMMAR ISMAIL*

Female genital system:

The organs of female genital system include:

1. Ovaries
2. Uterine tubes
3. Uterus
4. vagina
5. vulva



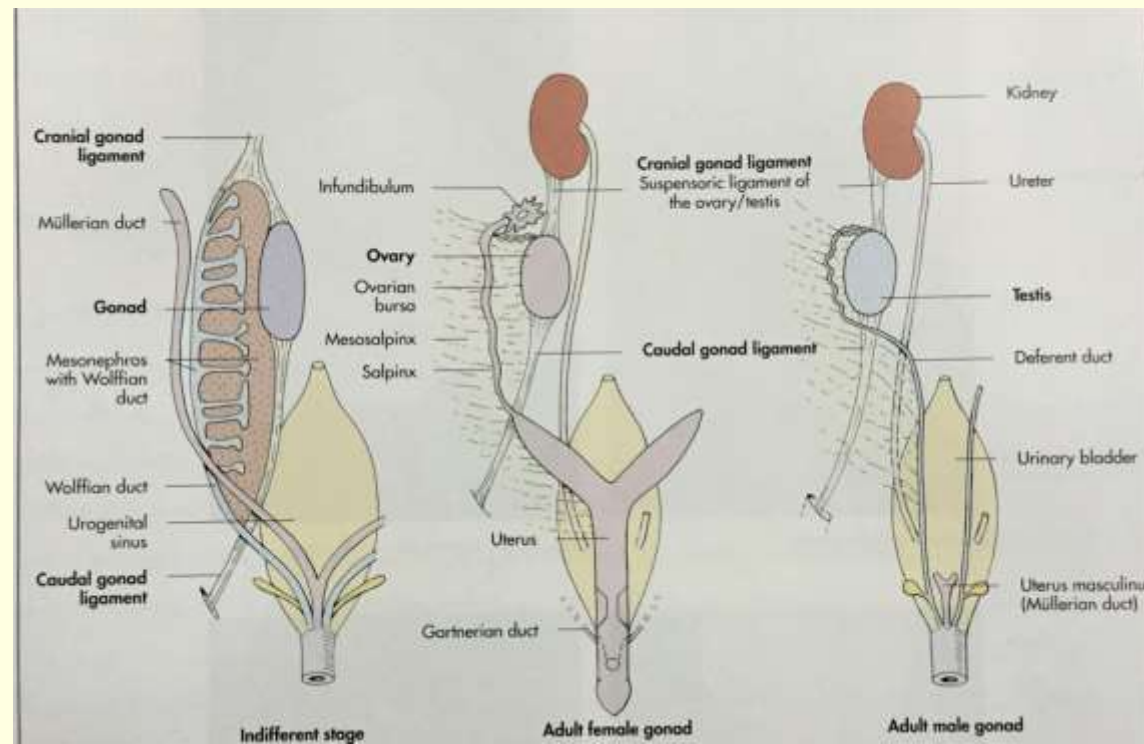
Development of genital organs

- The development of genital organs from mesoderm.
- In different stage:
- In this stage we can not differentiate between male and female, this stage occur at the forth week of pregnancy in the dog and in the sixth week in the ruminant.
- the young embryo exhibit gonads which at first give no evidence as to wither they are destined to develop into testis or ovary . they are also two different duct system .
 - 1.mullerian duct
 - 2. wolf duct .

Development of genital organs

If the embryo develops into **female** the müllerian duct forms the uterine tube, uterus & vagina and the wolffian duct remains rudimentary.

When the embryo develops into **male** the duct system of the testis & the müllerian duct remain rudimentary.



Factors effecting the genital system development

- The embryo develop to male when the following factor is presents .
- Testosterone
- Factor
- An antimuller factor

Ovary :

Ovaries of the domestic mammals are oval shape or round in shape they are nodular or tuberculated as a result of protruding follicles .

They are usually located in the sub lumbar region caudal to the kidneys. they are suspended by a part of broad ligament called mesovarium

Each ovary connected with uterine horn by the proper ligament of ovary

Except the mare there are a great number of follicles in the cortex of the ovary

They are found in the deferent stage of development

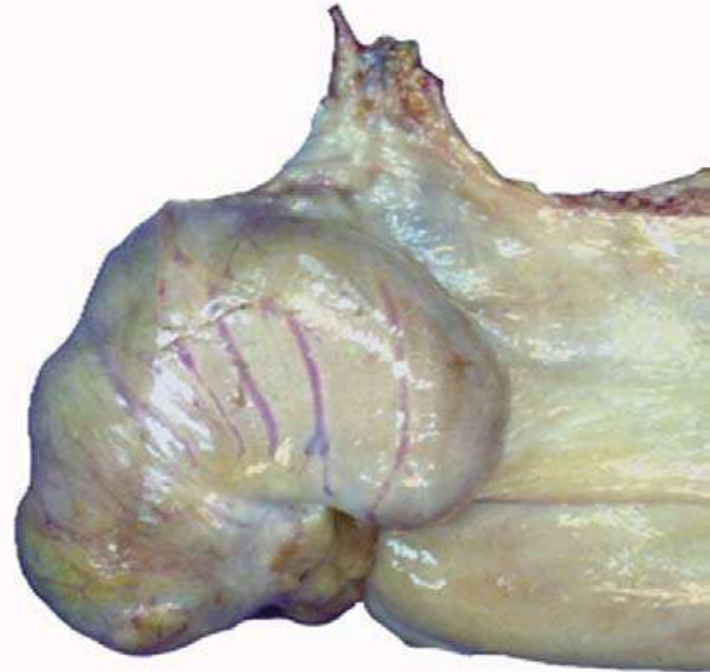
(primary, secondary, tertiary).



-
- Follicle : an oocyte surrounded with epithelial cells each follicle contained 1-2-6 ova after birth the female has complete number of oocyte , and this number decrease with increase of the age because of atresia and ovulation .
 - Ex :in the young cow there are 50 000 follicles in each ovary and decrease this number in the cow of 8 year to become 2500 follicles
 - Pig normal 60 000
 - wemon 400 000 ovulation 450 in 30 year .
 - When the follicle mature it rupture and release the ovum that main ovulation occur .
 - After the discharge of the ovum granulosa cells and cells of theca interna Influence of LH hormone began the formation of corpus luteum Which is a temporary endocrine gland secreting hormone called progesterone .
 -

mare ovary

Bean shape the three free border has depression called the ovulation fossa in which the ovulation occur the ovary of the mare is cover partially by the ovarian bursa . it is formed by the mesosalpinx and broad ligament most of the surface of the ovary is cover with peritoneum the attach border called hilus.



In the dog

Ovary is small the follicles contain more than 1 ovum

